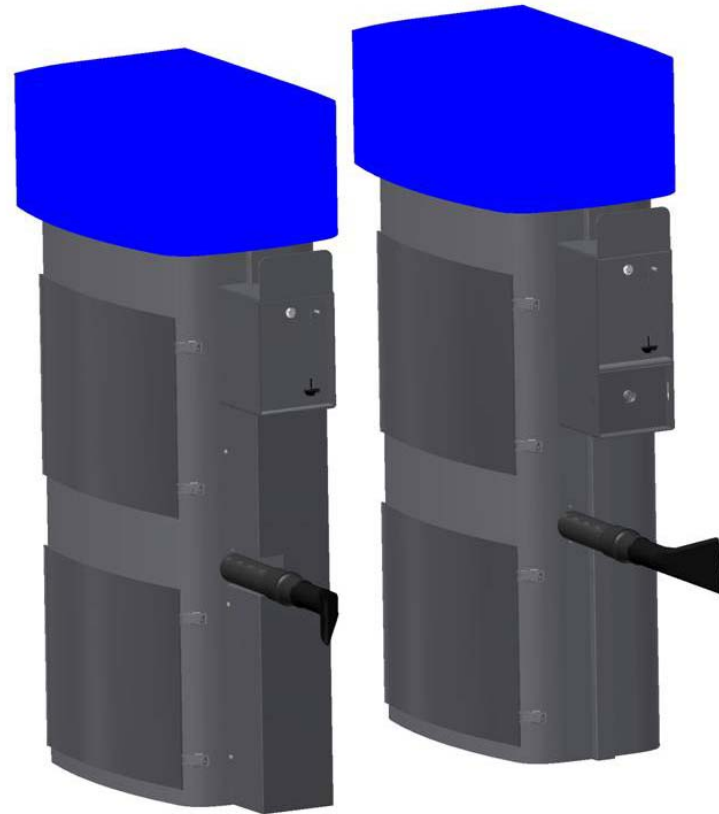




Models- 8930, 8930VR, 8940, 8940VR  
Oval Vacuums

Page 2	Product Information
Page 3	Specifications
Page 4	Important Safety Instructions
Page 5	Product Dimensions
Page 6-8	Installation
Page 9	Programming Timer
Page 10	Operating & Maintenance
Page 11	Troubleshooting
Page 12-17	Parts List & Wiring Diagram



# **PRODUCT INFORMATION**

Please take a moment to fill out the information below in order to aid us with any future sales or service inquiries. Model number and serial number information can be found on the serial tag located inside the control box and/or on the lower exterior of the can. Key number can be found on the tag that comes attached to the keys. There may be more than one key number depending on unit.

Please keep this information with your records.

**MODEL#:** \_\_\_\_\_

**SERIAL#:** \_\_\_\_\_

**KEY NUMBER(S):** \_\_\_\_\_

**DATE PURCHASED:** \_\_\_\_\_

**DISTRIBUTOR:** \_\_\_\_\_

**J.E. Adams Industries  
1025 63rd Ave. S.W.  
Cedar Rapids, IA 52404  
1-800-553-8861  
[www.jeadams.com](http://www.jeadams.com)**

# Specifications

Unit specifications: 8940, 8940VR (2 motor vacuum)  
Voltage: 120vac @ 60hz  
Amperage: (1) 20 amp service is required for this unit  
Timer: 120vac, SSAC Timer (Standard)  
Motors: (2) 120vac vacuum motor  
Fuses: (2) 10 amp inline fuses  
Weight: 213 lbs with pallet attached

---

Unit specifications: 8930, 8930VR (3 motor vacuum)  
Voltage: 120vac @ 60hz  
Amperage: (1) 30 amp service is required for this unit  
Timer: 120vac, SSAC Timer (Standard)  
Motors: (3) 120vac vacuum motor  
Fuses: (3) 10 amp inline fuses  
Weight: 219 lbs with pallet attached

**Duty cycle time 4 minutes on, 4 minutes off.**

**NOTE: "UNIT INTENDED FOR COMMECIAL USE ONLY"**

# IMPORTANT SAFETY INSTRUCTIONS

When using an electrical appliance, basic precautions should always be followed, including the following:

## READ ALL INSTRUCTIONS BEFORE USING (THIS APPLIANCE)

### WARNING – To reduce the risk of fire, electric shock, or injury:

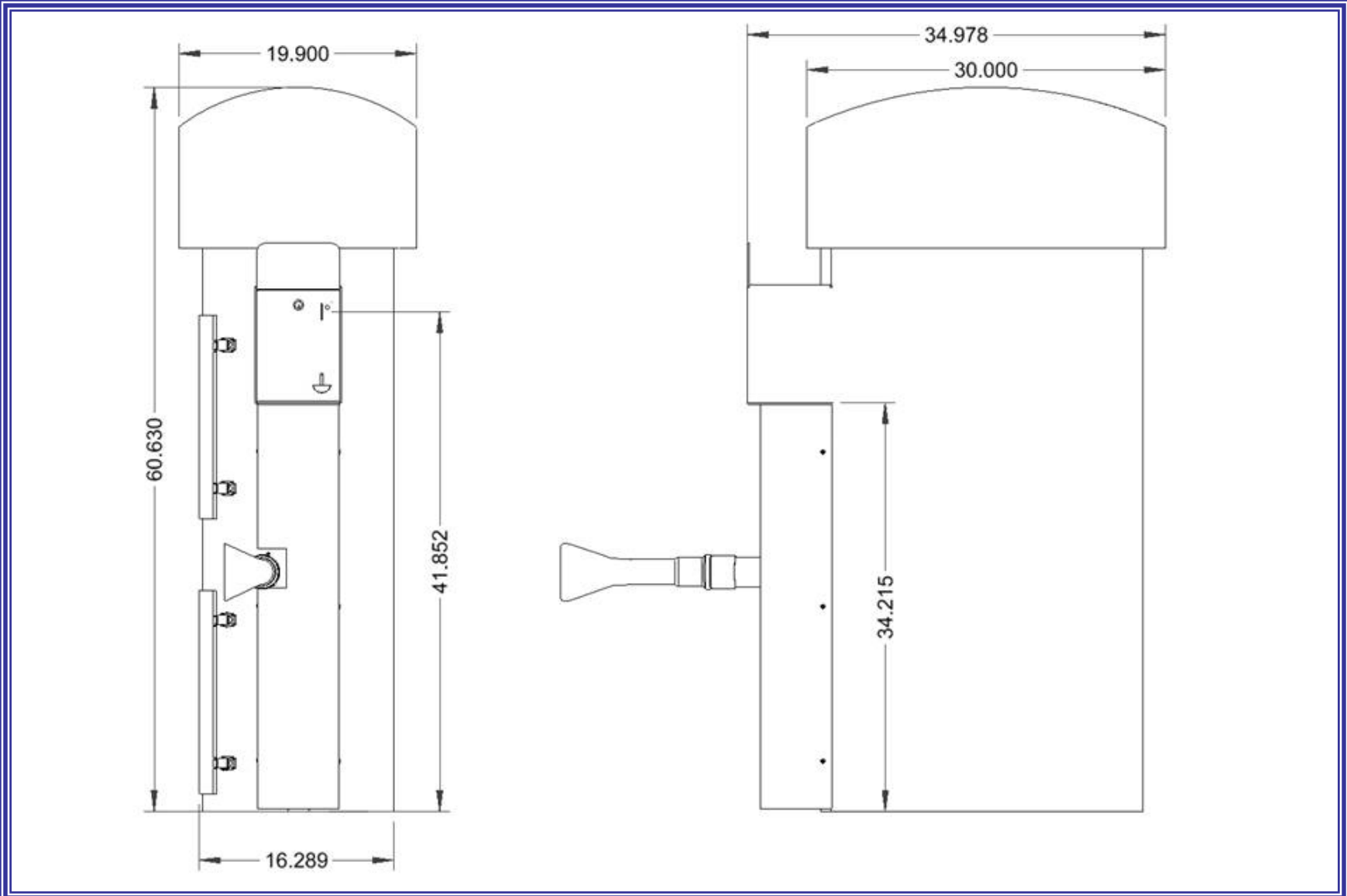


- Do not use on wet surfaces.
- Use only as described in manual. Use only manufactures recommended attachments.
- Do not allow to be used as a toy. Close attention is necessary when used by or near children.
- Do not put any object into openings. Do not use with any opening blocked; keep free of dust, lint, hair and anything that may reduce air flow.
- Keep hair, loose clothing, fingers, and all parts of body away from openings and moving parts.
- Do not use to pick up flammable or combustible liquids, such as gasoline, or use in areas where they may be present.
- “Do not pick up anything that is burning or smoking, such as cigarettes, matches, or hot ashes.”
- “DO not use without dust bag and/or filters in place.”

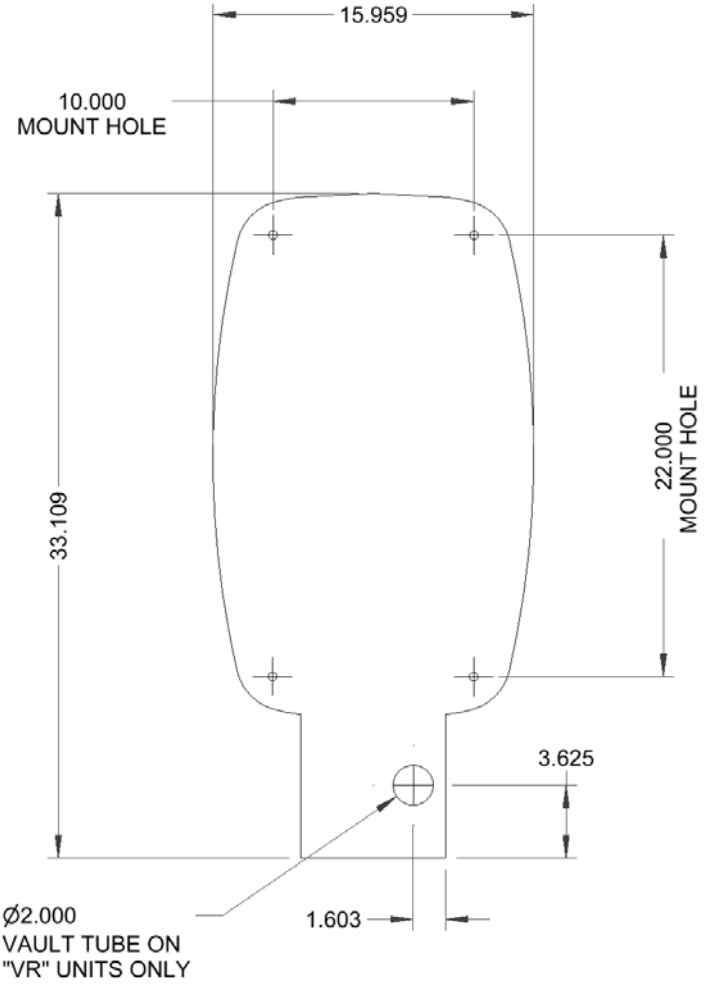
## SAVE THESE INSTRUCTIONS

- **Installation Instructions:**
- Determine location to mount unit (“**DANGER**” “**THIS EQUIPMENT INCORPORATES PARTS SUCH AS SWITCHES, MOTORS, OR THE LIKE THAT TEND TO PRODUCE ARCS OR SPARKS THAT CAN CAUSE AN EXPLOSION. WHEN LOCATED IN GASOLINE-DISPENSING AND SERVICE STATIONS INSTALL AND USE AT LEAST 20 FEET (6 M) HORIZONTALLY FROM THE EXTERIOR ENCLOSURE OF ANY DISPENSING PUMP AND AT LEAST 18 INCHES (450 MM) ABOVE A DRIVEWAY OR GROUND LEVEL.**”
- Run electrical service to that location
- **Grounding Instructions:** This appliance must be connected to a grounded metal, permanent wiring system; or an equipment-grounding conductor must be run with the circuit conductors and connected to the equipment-grounding terminal or lead on the appliance.
- All local and national electric codes must be followed for installation and use.
- Licensed electricians are recommended for installation.

# PRODUCT DIMENSIONS



# PLAN VIEW

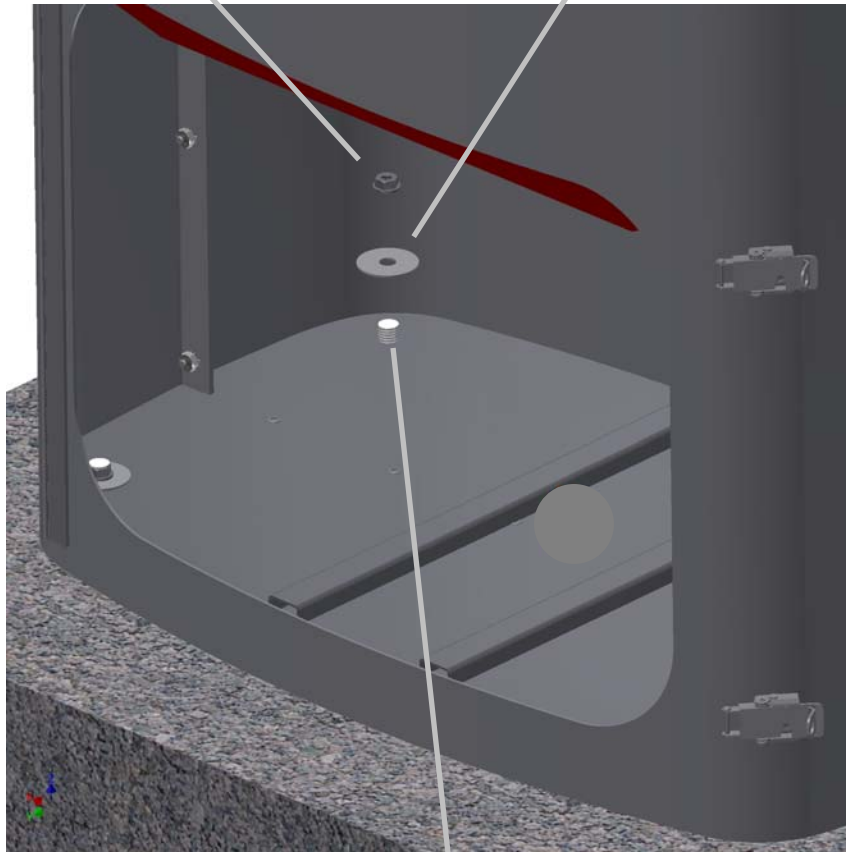


**NOTE: when mounting, provide clearance so cleanout doors can open!!**

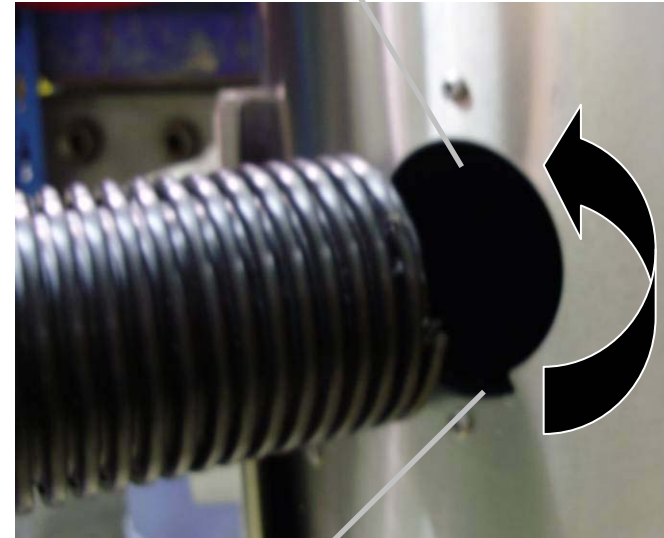


Nut.

Washer.



To attach hose,  
thread into metal hole  
counter clockwise.



Edge of  
hose will  
need to start  
here.

Using two people, set vacuum onto mounting studs and align bolts through holes in bottom. Use a washer and nut to tighten vacuum into place – DO NOT over tighten!! NOTE: JE Adams recommends using a sealer such as silicon underneath the washer to eliminate any loss of suction through the mounting holes.



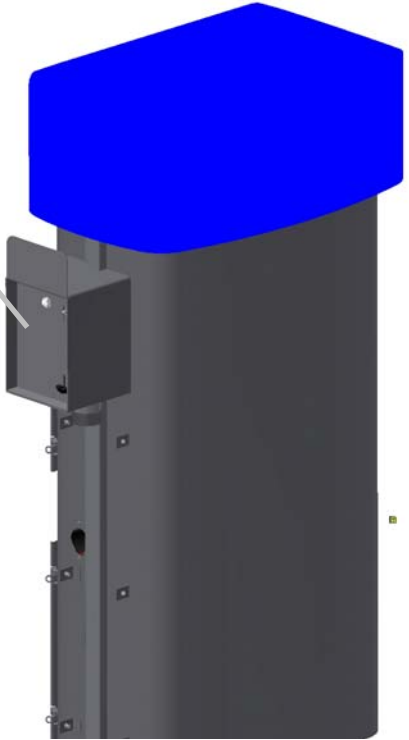
Incoming electrical ties into terminal strip behind faceplate cover.

- 1) Remove faceplate
- 2) Remove bolt from timer bracket and tilt it down: detailed view terminal strip tilted down – connect lines as labeled.



Timer brkt. bolt.

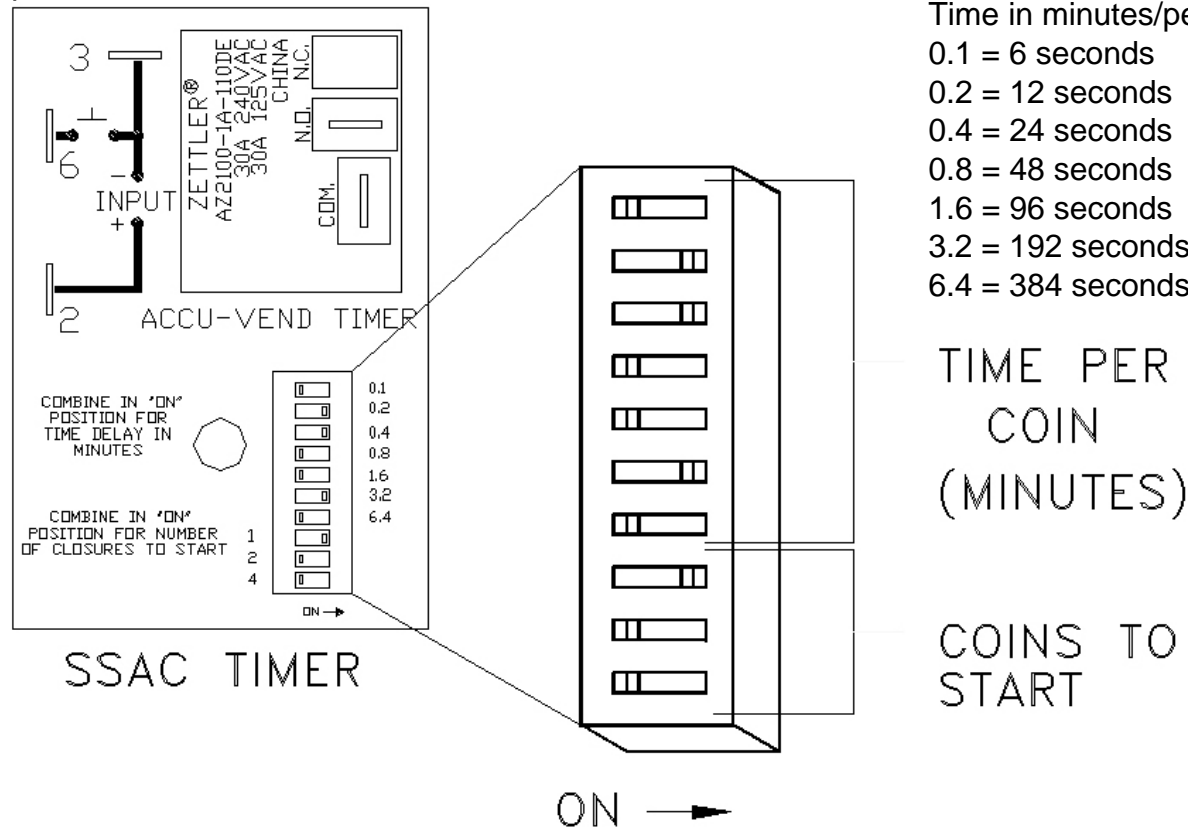
Ground bolt.





**Programming:**

The below timer pictured is the standard SSAC model that allows the end user to select the "coins to start" and the "time per coin" by settings series of dip switches. The number of "coins to start" dip switch is how many quarters are needed to make the machine come on. In the below example, the "one coin" dip is selected which makes the unit come on with one coin. The "time per coins" will then need to be set, but a good rule of thumb would be 4 minutes which requires dip switches 3.2 and .8 to be set to on. This scenario means 1 quarter will provide 4 minutes of vacuum time. The time per coin setting can be modified as desired by simply adding or subtracting time. If the operator would later decide to increase the cost of the unit to "2" quarters, the 2 dip switch would need to be in the on position (all other off) and the time dip switches would need to have the 1.6 and 0.4 dips selected. This would allow 2 minutes of time for each quarter for a total of 4 minutes for two quarters.



### **Operating Instructions:**

- 1) Insert coins or bills to start.
- 2) Remove vacuum hose from hanger and vacuum subject accordingly. Do not vacuum wet objects or fine dust (ex drywall dust).
- 3) For best results, have floor mats already removed from car.
- 4) Hang hose up when finished.

### **Maintenance:**

- **All servicing of machine should be conducted by an authorized service representative!**
- Filter bags should be accessed and shaken down weekly. It is recommended to keep a new set of bags on hand so that once every few months the bags can be replaced and then laundered.
- To maintain performance, empty dirt bin from the canister on a regular basis.
- Periodically inspect wires and connections for wear or fatigue.
- Check vac hose for cracks on a weekly basis.
- Clean canister with a stainless steel cleaner as needed. Decals can be cleaned with mild soap and water.
- Check motor brushes approx. every 3 months for excessive wear. Motor brushes should be changed if they are shorter than 3/8". ***Please disconnect power before doing this.***

***DISCONNECT POWER BEFORE SERVICING OR TROUBLESHOOTING!***




**Troubleshooting: !DISCONNECT POWER BEFORE SERVICING OR TROUBLESHOOTING!**



<b>Problem</b>	<b>Possible cause</b>	<b>Solution</b>
Unit is not powered.	Breaker inside fuse panel is not in the on position.	Turn breaker on.
	No power to machine.	Check incoming power line voltage.
	Loose connection.	Check incoming power connection.
Machine is behaving erratically.	Is the incoming power at 120V?	Check voltage and monitor while machine runs. Low voltage can cause erratic behavior.
	Are any of the machines wires worn through or connections not making contact?	Inspect wiring and connections. Look for sharp bends in wires and places where wire is against the metal chassis.
Unit keeps tripping breaker.	Inadequate wire size ran to machine.	Call electrician and install proper wire size for electrical service versus length or run.
	Wrong size breaker.	Install correct breaker (only if wire size is adequate to handle breaker).
Fuses for vac motors keep blowing.	Inadequate wire size ran to machine.	Call electrician and install proper wire size for electrical service versus length or run.
	Motor brushes may be bad or too short.	Replace motor brushes.
Lack of vacuum suction.	Vac hose clogged?	Clean debris from vac hose.
	Filter bags need cleaned or dirt chamber needs emptied?	Shake or clean filter bags or replace and empty lower dirt chamber.
	Vac hose is split?	Replace/repair vac hose.
	Cleanout door gaskets torn or worn?	Replace gaskets.
	Vac motor gaskets are worn or motor is not tight against.	Inspect/replace gaskets and assure motor is tight against them.
	Dual vac hose unit, both hoses are being used.	When both hoses are being used, suction will be lower. Double check all 3 motors are working however.
	Lower chamber cap plugs/mounting hole covers have popped out?	Open lower chamber and inspect plugs, order new if needed.
	Cleanout door gaskets torn or worn?	Replace gaskets.
	One of the vac motors is not working?	Check line motor fuse and replace. Replace motor if necessary.

PART NO.		8940VR		BILL OF MATERIALS				BILL OF MATERIALS			
ITEM	PART NUMBER	DESCRIPTION	QTY	ITEM	PART NUMBER	DESCRIPTION	QTY				
31	8920-4	OVAL DIRT BIN	1	1	1085	FLEXIBLE TRIM	12FT				
32	8920-71	BOX	1	2	2036	HOSE, 2" X 15' BLACK VACUUM	1				
33	8921-7W	DOME CLAMP WELDMENT	6	3	2058	CLAW/CUFF ASSEMBLY, 2"	1				
34	8925	FLOURESCENT BULB	2	4	5601D13	1/4-20 x 3/4 AQ BR OSC FAN	6				
35	8939	PALLET, DUAL, OVAL, SPECIALITY, 30" X 40"	1	5	5603D1	10 Std NC Nylock Nut	1				
36	8944VRW	WELDMENT, OVAL VACUUM, VR	1	6	5603D11	1/2 Std NC Nylock Nut	1				
37	8952W	FACEPLATE WELDMENT, CAM LOCK	1	7	5606D22	WASHER, 3/8 FENDER	8				
38	8953	MEDECO CAM LOCK W/2 KEYS	1	8	5622D11	HEX HEAD 3/8-16 x 3.5	4				
39	9200FPD	DECAL, FACEPLATE	1	9	5629D1	#8 x 1 SELF TAPPING SCREW	1				
40	B5722-002	NUT, 3/8-16 UNC HEX LOCK NUT	4	10	6082	BAG, 9 X 12	1				
				11	8047	BAG, 60 X 72	1				
				12	8051D-A	LIGHTED MOTOR BRACKET ASSEMBLY	1				
				13	8055EM	MOTOR, ELECTRO 120V	2				
				14	8057	MOTOR GASKET	2				
				15	8076	FILTER BAG	4				
				16	8081	CABLE TIE MOUNT	2				
				17	8084	CABLE TIE	2				
				18	8108	#10 x 1/2 TAP SCREW	4				
				19	8149	IMONEX COIN ACCEPTOR	1				
				20	8157	NUT, #6-32 KEPP NUT STAINLESS	4				
				21	8183	DECAL, WARNING	2				
				22	8221SS4	TIMER ASSY, 110 SSAC	1				
				23	8221WH2	WIRING HARNESS, 2 MOTOR	1				
				24	8422-1	DECAL, VACUUM	1				
				25	8429-1	DECAL, HANG HOSE	1				
				26	8437D001	DECAL, ETL LISTED	1				
				27	8673-11	GROUND WIRE 28"	1				
				28	8732	NAMEPLATE, PRODUCT SPECS	1				
				29	8754	WARNING DECAL	1				
				30	8915B	DOME, OVAL, BLUE	1				



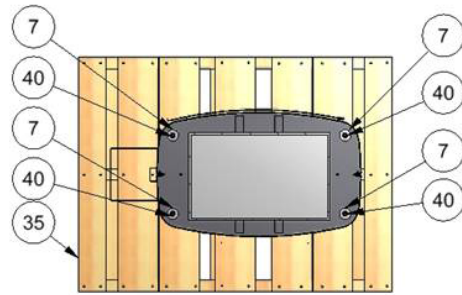
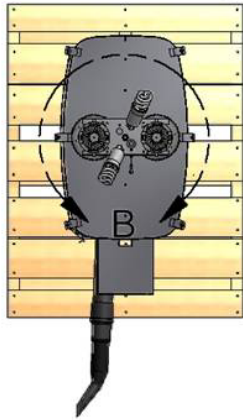
  

TITLE					
<b>2 MOTOR OVAL VACUUM, VR</b>					
UNSPECIFIED TOLERANCES		MATERIAL		CEDAR RAPIDS, IOWA	
1 PL ±.030	SCALE				
2 PL ±.010	DRAWN BY				CHAD K.
3 PL ±.003	DATE				5/19/2011
ANGLE ±1.0°	PART NO.		8940VR	REV. A	

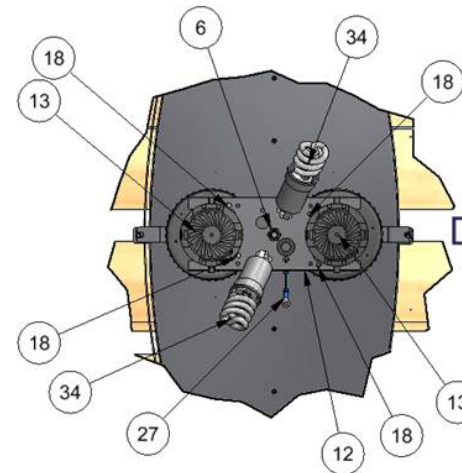
  

A	6527	REVISED AND DRAWN TO INVENTOR	5-19-11	CK
REV	NO.	DESCRIPTION	DATE	BY
THIS DOCUMENT SHALL NOT BE REPRODUCED NOR SHALL THE INFORMATION THEREIN BE USED BY OR DISCLOSED TO OTHERS EXCEPT AS AUTHORIZED BY J.E. ADAMS INDUSTRIES				

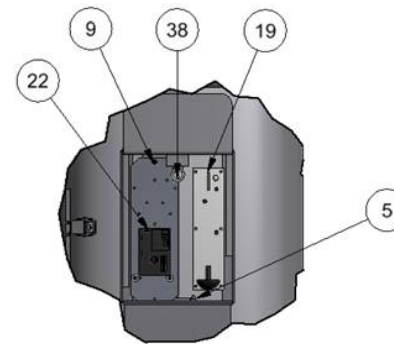
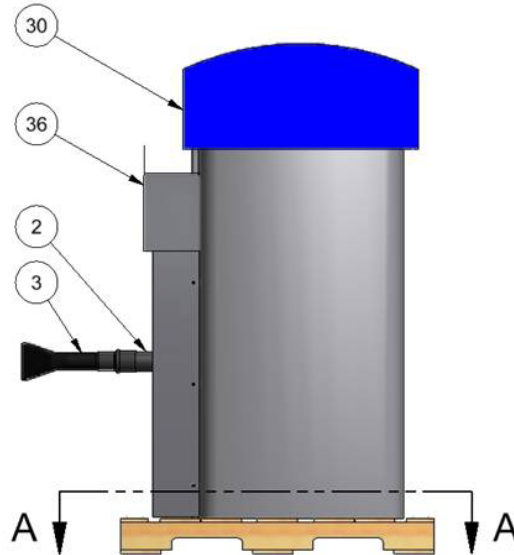
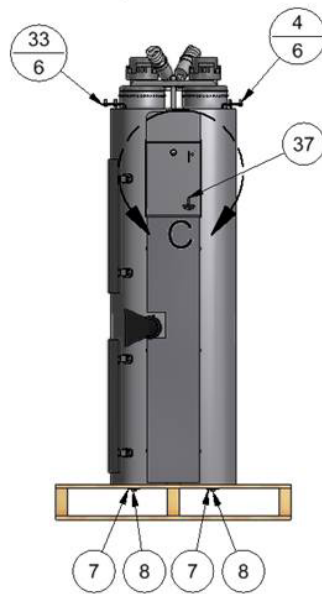
PART NO. 8940VR




SECTION A-A



DETAIL B



DETAIL C

TITLE		CEDAR RAPIDS, IOWA	
2 MOTOR OVAL VACUUM, VR			
UNSPECIFIED TOLERANCES	MATERIAL		
1 PL ±.030	SCALE		
2 PL ±.010	DRAWN BY CHAD K.		
3 PL ±.003	DATE 5/19/2011		
ANGLE ±1.0°	PART NO. 8940VR	REV. A	

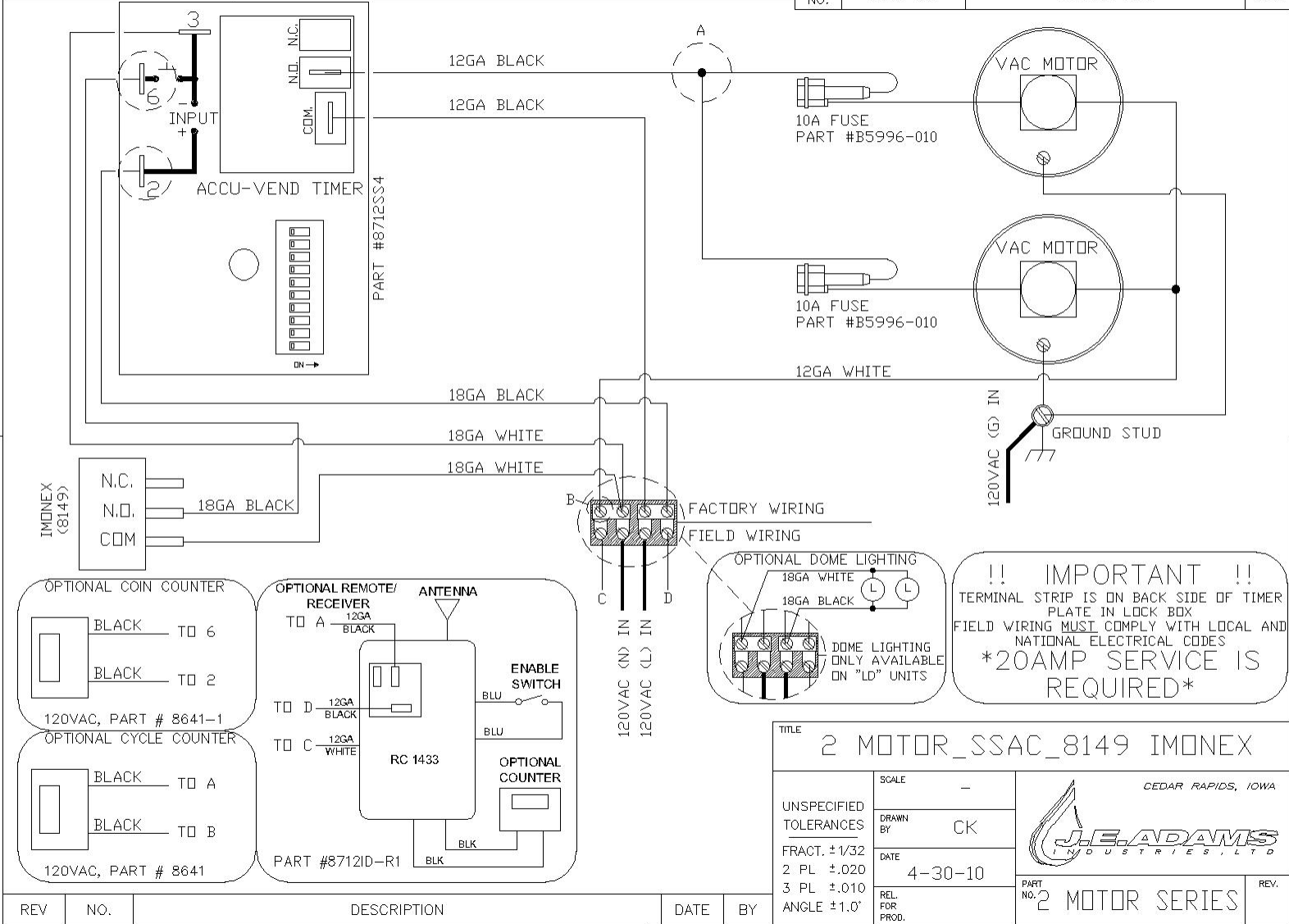
REV	NO.	DESCRIPTION	DATE	BY
THIS DOCUMENT SHALL NOT BE REPRODUCED NOR SHALL THE INFORMATION THEREIN BE USED BY OR DISCLOSED TO OTHERS EXCEPT AS AUTHORIZED BY J.E. ADAMS INDUSTRIES				

PART NO. 2 MOTOR SERIES

THIS DOCUMENT SHALL NOT BE REPRODUCED NOR SHALL THE INFORMATION THEREIN BE USED BY OR DISCLOSED TO OTHERS EXCEPT AS AUTHORIZED BY J.E. ADAMS INDUSTRIES

BILL OF MATERIAL





ITEM NO.	PART NO.	DESCRIPTION	QTY.
----------	----------	-------------	------



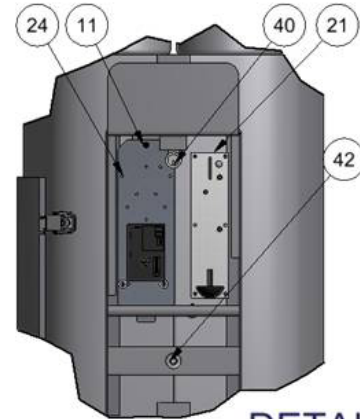
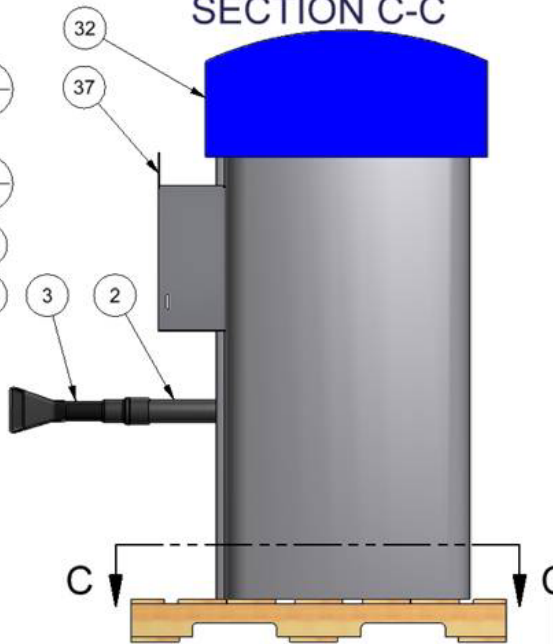
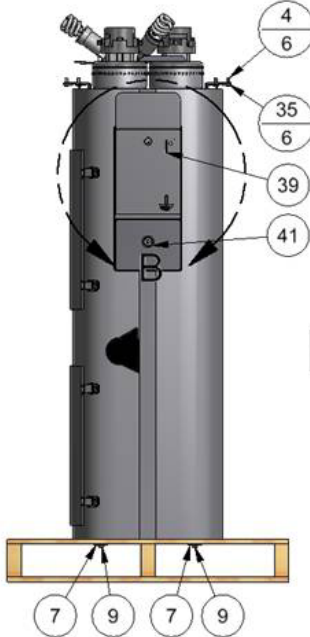
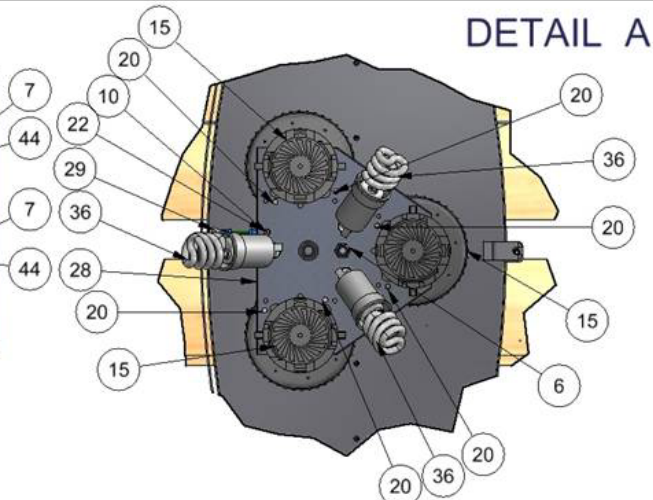
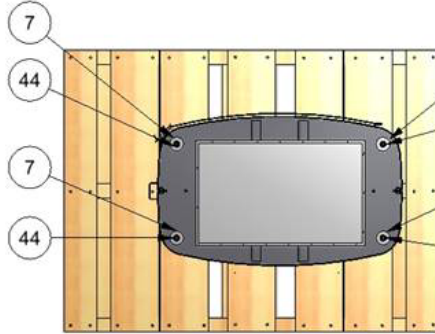
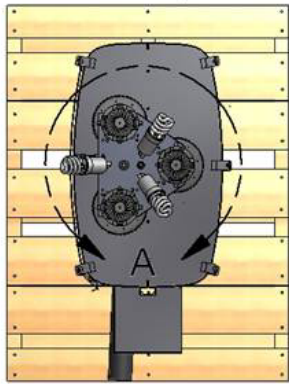
TITLE 2 MOTOR_SSAC_8149 IMONEX		SCALE -	CEDAR RAPIDS, IOWA
UNSPECIFIED TOLERANCES	DRAWN BY CK	DATE 4-30-10	
FRACT. ±1/32 2 PL ±.020 3 PL ±.010 ANGLE ±1.0°	REL. FOR PROD.		

REV	NO.	DESCRIPTION	DATE	BY
-----	-----	-------------	------	----



PART NO.		8930																																					
BILL OF MATERIALS				BILL OF MATERIALS																																			
ITEM	PART NUMBER	DESCRIPTION	QTY	ITEM	PART NUMBER	DESCRIPTION	QTY																																
33	8920-4	OVAL DIRT BIN	1	1	1085	TRIM, FLEXIBLE	12FT																																
34	8920-71	BOX	1	2	2036	HOSE, 2" X 15' BLACK VACUUM	1																																
35	8921-7W	DOME CLAMP WELDMENT	6	3	2058	CLAW/CUFF ASSEMBLY, 2"	1																																
36	8925	FLOURESCENT BULB	3	4	5601D13	1/4-20 x 3/4 AQ BR OSC FAN	6																																
37	8935W	WELDMENT, OVAL VACUUM	1	5	5603D1	10 Std NC Nylock Nut	1																																
38	8939	PALLET, DUAL, OVAL, SPECIALITY, 30" X 40"	1	6	5603D11	1/2 Std NC Nylock Nut	1																																
39	8952W	FACEPLATE WELDMENT, CAM LOCK	1	7	5606D22	WASHER, 3/8 FENDER	8																																
40	8953	MEDECO CAM LOCK W/2 KEYS	1	8	5606D7	FLAT WASHER, .160 ID X .500 OD	1																																
41	8954W	COIN BOX WELDMENT, SCREW LOCK	1	9	5622D11	HEX HEAD 3/8-16 x 3.5	4																																
42	8955	MEDECO SCREW LOCK	1	10	5627D2	Pan Head, Slotted, 6-32 x 5/8	1																																
43	9200FPD	DECAL, FACEPLATE	1	11	5629D1	#8 x 1 SELF TAPPING SCREW	1																																
44	B5722-002	NUT, 3/8-16 UNC HEX LOCK NUT	4	12	5644D1	CAGE NUT	1																																
				13	6082	BAG, 9 X 12	1																																
				14	8047	BAG, 60 X 72	1																																
				15	8055EM	MOTOR, ELECTRO 120V	3																																
				16	8057	MOTOR GASKET	3																																
				17	8076	FILTER BAG	4																																
				18	8081	CABLE TIE MOUNT	2																																
				19	8084	CABLE TIE	4																																
				20	8108	#10 x 1/2 TAP SCREW	6																																
				21	8149	IMONEX COIN ACCEPTOR	1																																
				22	8157	NUT, #6-32 KEPP NUT STAINLESS	5																																
				23	8183	DECAL, WARNING	2																																
				24	8221SS4	TIMER ASSY, 110 SSAC	1																																
				25	8221WH3	WIRING HARNESS, 3 MOTOR	1																																
				26	8422-1	DECAL, VACUUM	1																																
				27	8437D001	DECAL, ETL LISTED	1																																
				28	8543K-3	3 MOTOR LIGHT KIT	1																																
				29	8673-11	GROUND WIRE 28"	1																																
30	8732	NAMEPLATE, PRODUCT SPECS	1																																				
31	8754	WARNING DECAL	1																																				
32	8915B	DOME, OVAL, BLUE	1																																				
<table border="1"> <tr> <td>A</td> <td>6511</td> <td>REVISED AND DRAWN TO INVENTOR; NO PREVIOUS DRAWING</td> <td>5-12-11</td> <td>CK</td> </tr> <tr> <td>REV</td> <td>NO.</td> <td>DESCRIPTION</td> <td>DATE</td> <td>BY</td> </tr> </table>				A	6511	REVISED AND DRAWN TO INVENTOR; NO PREVIOUS DRAWING	5-12-11	CK	REV	NO.	DESCRIPTION	DATE	BY	<table border="1"> <tr> <td colspan="2">TITLE</td> <td colspan="2">3 MOTOR OVAL VACUUM</td> </tr> <tr> <td>UNSPECIFIED TOLERANCES</td> <td>MATERIAL</td> <td colspan="2">CEDAR RAPIDS, IOWA</td> </tr> <tr> <td>1 PL ±.030</td> <td>SCALE</td> <td colspan="2" rowspan="3">  </td> </tr> <tr> <td>2 PL ±.010</td> <td>DRAWN BY</td> <td>CHAD K.</td> </tr> <tr> <td>3 PL ±.003</td> <td>DATE</td> <td>5/12/2011</td> </tr> <tr> <td>ANGLE ±1.0°</td> <td>PART NO.</td> <td>8930</td> <td>REV. A</td> </tr> </table>				TITLE		3 MOTOR OVAL VACUUM		UNSPECIFIED TOLERANCES	MATERIAL	CEDAR RAPIDS, IOWA		1 PL ±.030	SCALE			2 PL ±.010	DRAWN BY	CHAD K.	3 PL ±.003	DATE	5/12/2011	ANGLE ±1.0°	PART NO.	8930	REV. A
A	6511	REVISED AND DRAWN TO INVENTOR; NO PREVIOUS DRAWING	5-12-11	CK																																			
REV	NO.	DESCRIPTION	DATE	BY																																			
TITLE		3 MOTOR OVAL VACUUM																																					
UNSPECIFIED TOLERANCES	MATERIAL	CEDAR RAPIDS, IOWA																																					
1 PL ±.030	SCALE																																						
2 PL ±.010	DRAWN BY			CHAD K.																																			
3 PL ±.003	DATE			5/12/2011																																			
ANGLE ±1.0°	PART NO.	8930	REV. A																																				
THIS DOCUMENT SHALL NOT BE REPRODUCED NOR SHALL THE INFORMATION THEREIN BE USED BY OR DISCLOSED TO OTHERS EXCEPT AS AUTHORIZED BY J.E. ADAMS INDUSTRIES																																							

PART NO. 8930



DETAIL B

TITLE		CEDAR RAPIDS, IOWA	
3 MOTOR OVAL VACUUM			
UNSPECIFIED TOLERANCES	MATERIAL		
1 PL ±.030	SCALE	8930	A
2 PL ±.010	DRAWN BY CHAD K.		
3 PL ±.003	DATE 5/12/2011		
ANGLE ±1.0°			

REV	NO.	DESCRIPTION	DATE	BY
THIS DOCUMENT SHALL NOT BE REPRODUCED NOR SHALL THE INFORMATION THEREIN BE USED BY OR DISCLOSED TO OTHERS EXCEPT AS AUTHORIZED BY J.E. ADAMS INDUSTRIES				

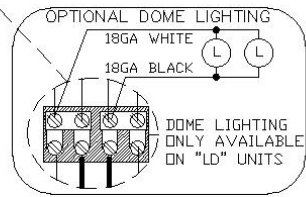
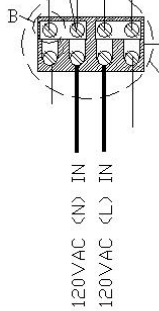
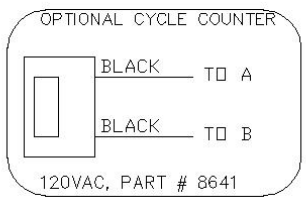
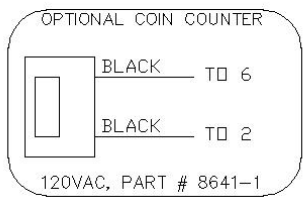
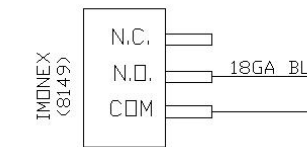
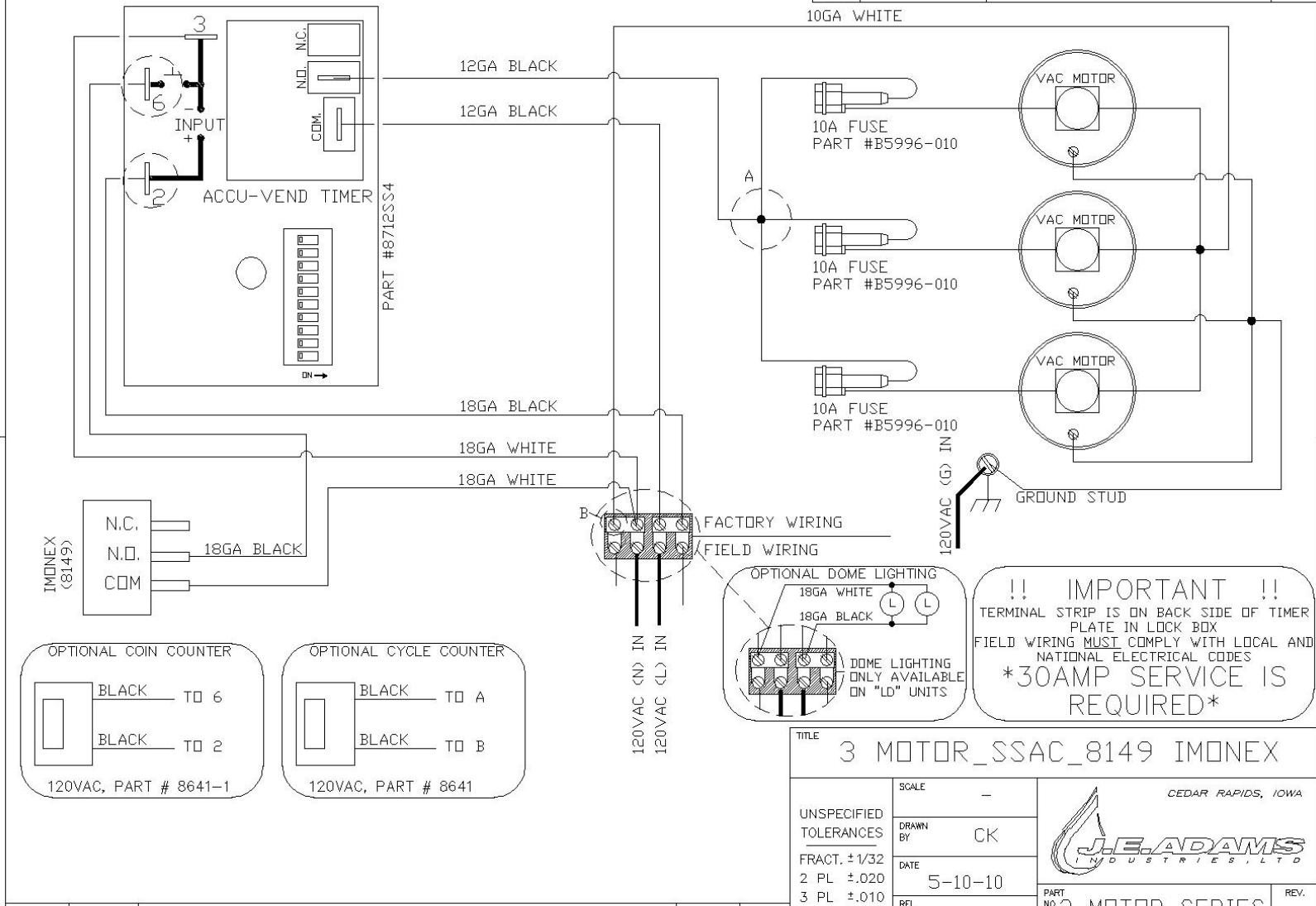


PART No. 3 MOTOR SERIES


THIS DOCUMENT SHALL NOT BE REPRODUCED NOR SHALL THE INFORMATION THEREIN BE USED BY OR DISCLOSED TO OTHERS EXCEPT AS AUTHORIZED BY J.E. ADAMS INDUSTRIES

BILL OF MATERIAL

ITEM NO.	PART NO.	DESCRIPTION	QTY.
----------	----------	-------------	------



**!! IMPORTANT !!**  
 TERMINAL STRIP IS ON BACK SIDE OF TIMER PLATE IN LOCK BOX.  
 FIELD WIRING MUST COMPLY WITH LOCAL AND NATIONAL ELECTRICAL CODES  
**\*30AMP SERVICE IS REQUIRED\***

TITLE		3 MOTOR_SSAC_8149 IMONEX	
UNSPECIFIED TOLERANCES	SCALE	-	
FRACT. ± 1/32	DRAWN BY	CK	
2 PL ± .020	DATE	5-10-10	
3 PL ± .010	REL FOR PROD.		
ANGLE ± 1.0°	 CEDAR RAPIDS, IOWA		REV.
REV	NO.	DESCRIPTION	PART NO. 3 MOTOR SERIES